

FieldCast

# Installation and Operation Manual

## FieldCast Adapter One

Model: Adapter One Plus

[www.fieldcast.eu](http://www.fieldcast.eu)

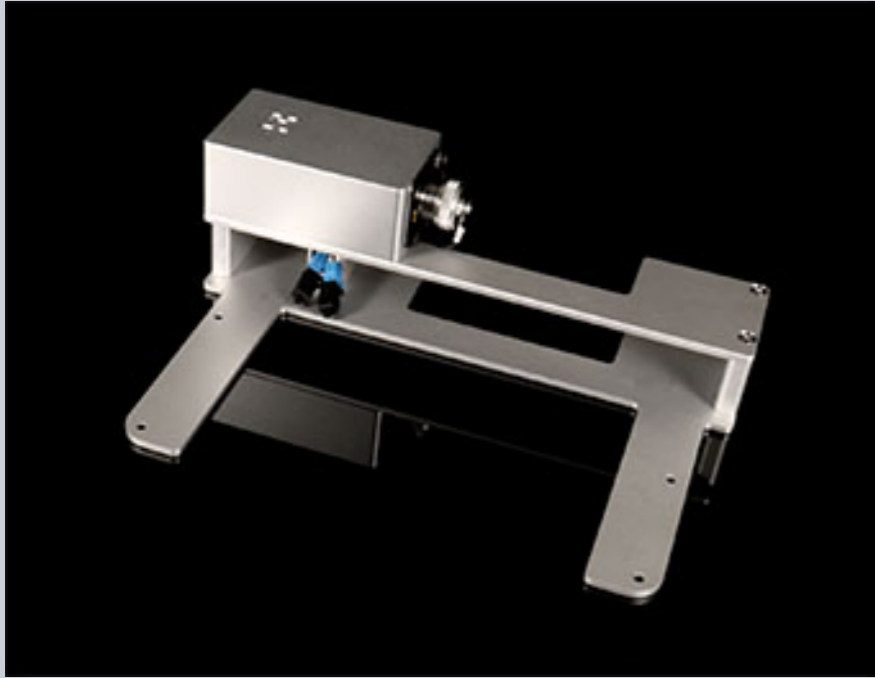
November 2018

version1.0



## **Table of Contents**

<b>Welcome</b>	3
<b>Installation</b>	5
Caution	5
What is in the package?	5
Assembling to Camera Converter	6
<b>Using Adapter One Plus</b>	8
<b>Specifications</b>	10



## Welcome

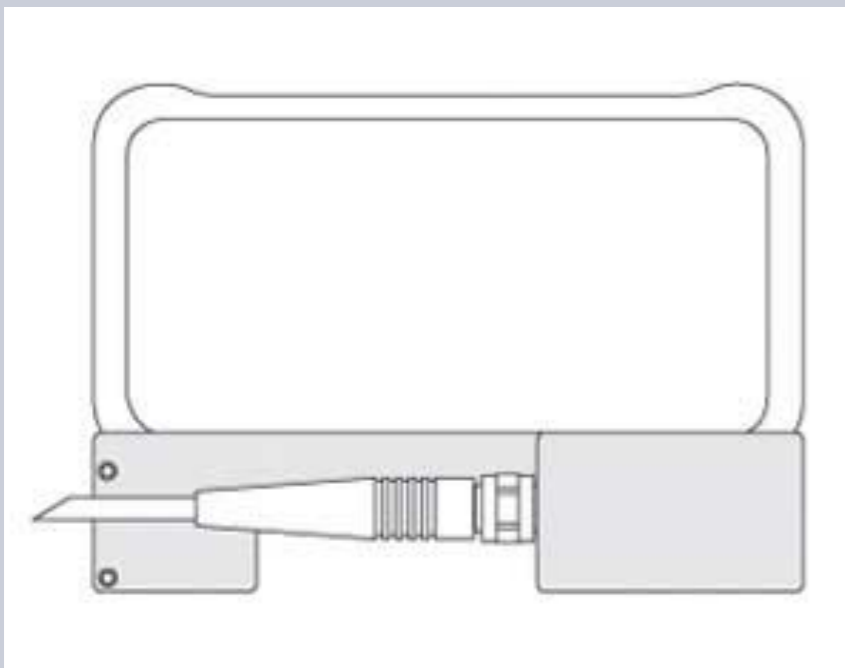
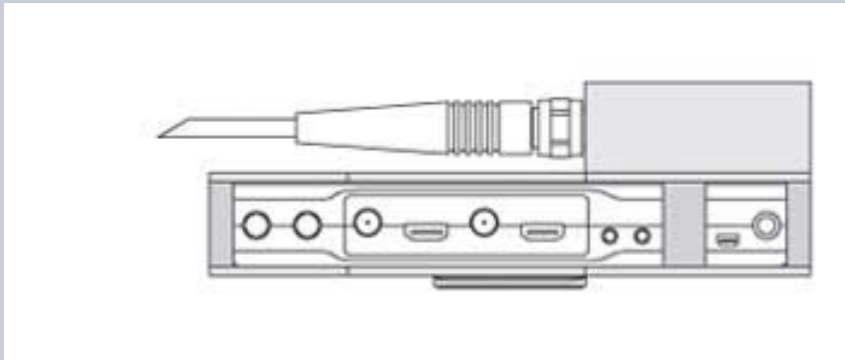
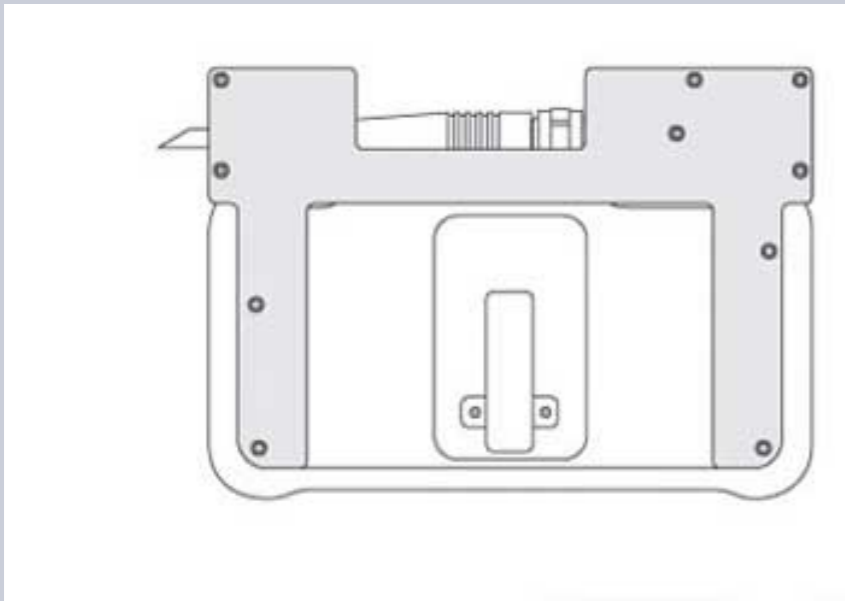
Thank you for purchasing FieldCast Adapter One Plus for your live production work.

Adapter One Plus is one of the three models in our Adapter One series which consist of Adapter One standard version, Adapter One Plus and Adapter One Hybrid.

With Adapter One you create a bridge between FieldCast's robust fiber optic connectivity and the vulnerable LC plug of Blackmagic Design's ATEM Camera Converter.

Adapter One is a robust all aluminum solution, built around a milled out block completely covering and protecting the vulnerable LC connections to the SFP of Camera Converter.

Adapter One mounts to the back of Camera Converter using the four taps of its housing; no customizing, no drilling, no glueing whatsoever.



Adapter One Plus is exactly the same as the Adapter One standard version but differs in one aspect. Adapter One standard doesn't interfere with the power connection of Camera Converter where Adapter One Plus does. Adapter One Plus uses a four pin XLR male connector to bridge to the power connector of Camera Converter. It does so by internally using a 90 degree power plug to tap into the power connector of Camera Converter. This does not change the functionality of Camera Converter.

Equipped with an XLR male connector on the outside of Adapter One Plus you can feed your Camera Converter with your standard battery pack equipment or recharge its internal battery with power supplies that use standard XLR connectors!

Now you can go into the field with not only a robust fiber connection but also having the 'plus' of robust power supply connection to your Camera Converter.

In this manual you will find instructions how to assemble Adapter One Plus to your Camera Converter and how to use it. On the last page you will find the specifications.

If you need any extra service and support you can send an email to [support@fieldcast.eu](mailto:support@fieldcast.eu)

## **Installation**

### **Caution**

Please note that the fiber optic fanouts are highly vulnerable. You can't treat them like copper wires. When you bend them too much they can easily break. Take particular care not to damage them during the assembly process!

### **What is in the package?**

When you open Adapter One Plus you will find the following parts.

- Adapter One Plus aluminum case
- protection block with 2 short M3 5mm. mounting screws
- a hex key
- 4x countersunk M3 20mm. mounting screw for connection to Camera Converter

## **Assembling to Camera Converter**

- Step 1. Remove the four rubber feet of Camera Converter, and use the hex key to also remove the four black screws; take care to keep top part and bottom part of the unit together.
- Step 2. Place Camera Converter on top of the two ears of Adapter One Plus and gently slide it in; while doing so, slide the black power plug into the power connector of Camera Converter.
- Step 3. Line up Camera Converter and Adapter One Plus in such a way that the holes in the ears of Adapter One Plus bottom plate are matching the four holes in the bottom of Camera Converter.
- Step 4. Use the four 20 mm. screws to fix Adapter One Plus to Camera Converter; the screw heads are cone shaped, so everything will center perfectly.
- Step 5. Connect LC connector A to the 'IN' port, and LC connector B to the 'OUT' port of the Camera Converter SFP; a soft 'click' will tell you that the connection is safe and sound.

- Step 6. Carefully push back the two thin yellow cables into the housing of the Adapter; if you do this gently, you will find that the cables will find their own way inside of the housing; take your time, don't push too hard or bend too much.
- Step 7. After the two cables are pushed back in, you can cover them by sliding in the small aluminum protector block; the tapped holes will match the two holes in the bottom plate of the Adapter.
- Step 8. Now you can secure the protector block using the two remaining small screws.

All is ready, and you can use Camera Converter with FieldCast 2Core cable now, and feed it over the 4-pin male XLR connector!



Step 1.

## Using Adapter One Plus

Adapter One Plus is specifically developed for use in conjunction with FieldCast 2Core single mode (SM) cable.

Adapter One Plus has a FieldCast connector with 2 yellow dots on a black cover plate, indicating that it is a 2Core single mode product. The 2 yellow dots are part of the FieldCast color coding system. They match with 2 yellow rings on the cable connector of a FieldCast main cable. Just follow the color codes and you are always sure that a main cable with 2 yellow rings fits into the connector of Adapter One. And as a system they fit to Camera Converter as Camera Converter is a 2Core single mode product as well.

FieldCast offers 100m and 200m 2Core single mode main cables in Ultra Light and Heavy Duty quality. You can find them on <https://fieldcast.eu/products/cables/fieldcast-2core/single-mode/main-cable>



Step 2.

- Step 1. Connect a 2Core single mode main cable to the connector of Adapter One Plus. Connecting FieldCast connectors is very simple. Unscrew the dust caps from both Fieldcast connectors. Hold one hand on the black sleeve of the main cable connector. Turn from here a bit around until it clicks in the connector of Adapter One Plus. Put your other hand on the nut, which is at the end of the main cable connector, and screw it on to get a tight fit. Screw the dust caps of the two FieldCast connectors to each other so that they cannot stand in the way.

Now you have a robust fiber optic connection between our main cable and Blackmagic Design ATEM Camera Converter, fast and easy. You now can use Camera Converter straight away provided enough internal battery power is available.

- Step 2. Connect your external battery pack or power supply to the four pin XLR male connector of Adapter One Plus.

Now you also have a robust connection with the power connector of Camera Converter. You can now feed Camera Converter with your standard battery pack equipment or recharge its internal battery with power supplies.

## Specifications

- rugged milled out aluminum case, glass blasted and anodized
- color coded FieldCast 2Core SM Connector with D-size flange
- custom FieldCast ultra short bend insensitive patching cable inside
- standard single mode 9/125 fiber optic technology
- standard PC polished LC Duplex connections to SFP
- 4-pin XLR male connector for external power supply input (pin 4 = +12V, pin 1 = GND)
- 90 degree 5.5mm. OD x 2.5mm. ID power plug for connecting to Camera Converter unit
- 4x countersunk M3 20mm. mounting screw for connection to Camera Converter
- dimensions: 200 (L) x 133 (B) x 62 (H) mm.
- weight 360 grams